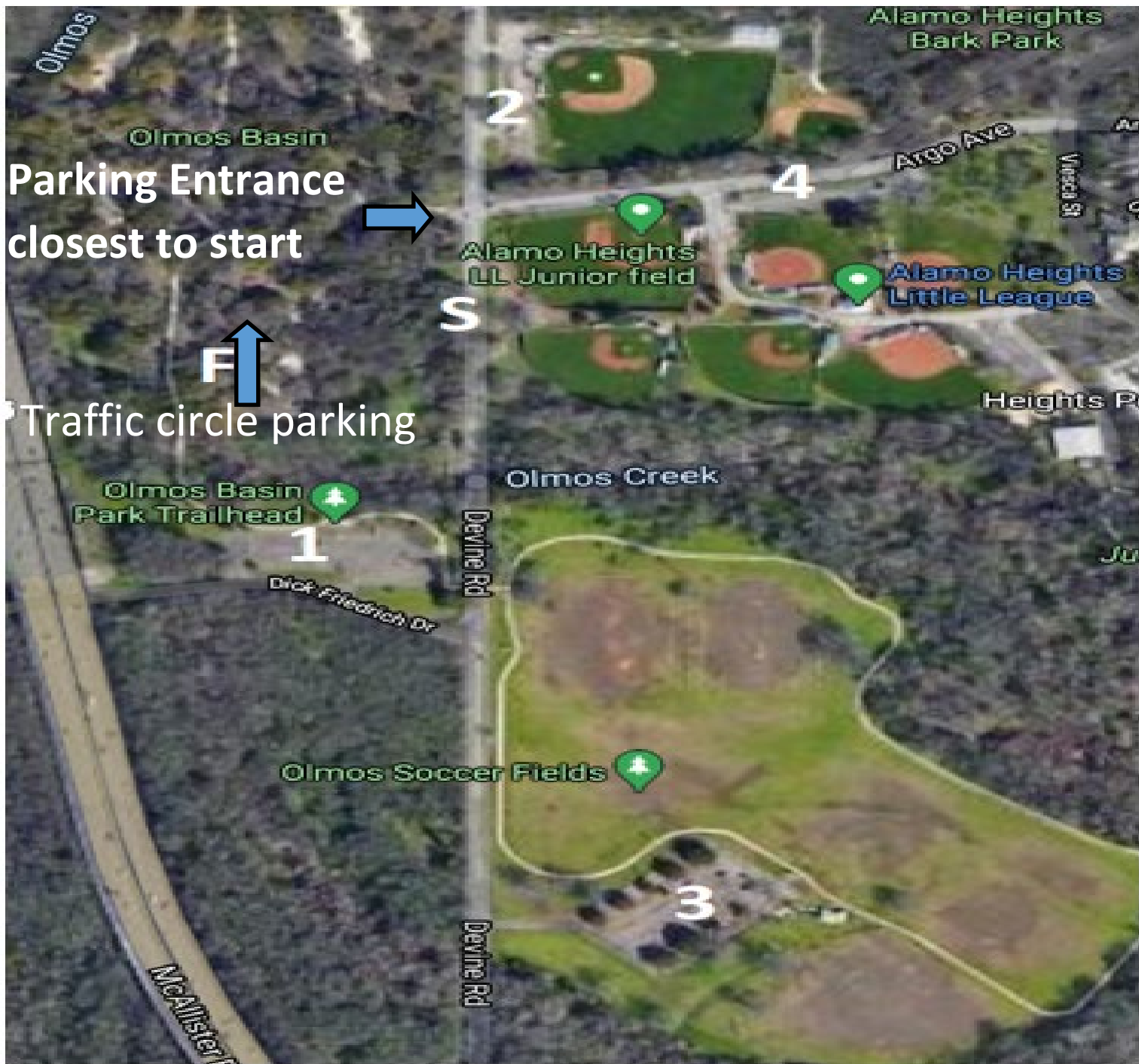


San Antonio 2024 Orienteering Championships

Saturday, 17 February 2024

Join LSOC at Olmos Basin Park on Saturday, 17 February 2024 for a Sport Orienteering event. We will be at the Olmos Basin Clubhouse area West of the Alamo Heights HS baseball field. Several parking areas are available (see map below).



- 1:** Main Parking
- 2, 3, 4:** Overflow Parking
- S:** Start Location
- F:** Finish Location

Directions

South on US 281, exit Hildebrand Avenue, turn right on Hildebrand Avenue, go .3 miles and turn left Devine Road, Go .1 miles and turn left on Tuleta Drive, go .4 miles and at the traffic circle take the 1st exit onto N Saint Mary's Street, go 479 feet and turn left into the parking lot. Follow the map to Koehler Pavilion between the river and the zoo.

North on US 281, exit Stadium Drive toward Saint Mary's Street and go .3 miles, turn right on Saint Mary's Street and go .6 miles, turn right in to the Soo and Brackenridge Train parking lot. Follow the map to Koehler Pavilion between the river and the zoo.

Same-day registration is not allowed. Registration for pre-payment online ends 14 February. **No documentation or payments will be accepted on-site unless pre-coordinated.**

All courses require an E-Punch finger stick. E- Punch finger sticks are available for rental (\$3). Participants must bring their own compass.

Courses (estimated controls and distances)

Course	Description	Controls	Distance
White	Beginner Novice course	10	2.3 km
Yellow	Novice course	14	2.9 km
Orange	Intermediate course	14	4 km
Green	Advanced course	14	4.3 km

Classes

White	Yellow	Orange	Green
F 13-	F13-	F1-18	F1-18
F-14-18	F14-18	M1-18	M1-18
F-Open	M13-	F-Open	F18+
M13-	M14-18	M-Open	M18+
M-14-18	F-Open		M35+
M-Open	M-Open		F35+
			M50+
			F50+

Team High School Competition

High Schools enter participants 18 and younger. 1st place in a class (White, Yellow, Orange, or Green) and gender is worth 6 points. 2nd place scores 4 points and 3rd place scores 2 points. The high school with the highest score wins.

Fees

Fees are shown below. One map per registration fee. This race is for **individual starts**. A single entry fee covers the individual competition and the team competition. The control points must be visited in the specified order shown on the map.

Registration	
Age	Entry Cost
18 and younger	\$20.00
19 and over	\$30.00

Schedule

Participants will request their start time when completing registration online. Participants' start times will be posted on the LSOC website prior to the event. All participants are expected to begin the course promptly at their start time. A 15 minute beginner class is offered at 0930 at the Olmos Clubhouse area. The first start is at 10:00 am, the last start is at 12:00 noon, with a 2-hour time limit for all courses. LSOC prefers to start runners as early as possible so we can have maximum attendance at the awards ceremony. All runners must be off all courses by 2:00 pm. The awards ceremony will be held no later than 2:pm near the Olmos Clubhouse area. The award ceremony usually starts around 1 pm.

Weather

For current forecast click [here](#).

Meet Director

Clai Gardner 210-315-4057
lonestarorienteer@gmail.com